



Patchway

Community School

OPEN EVENING

Thursday 18th September 2025



Transition



tran·si·tion

[trɑːnˈzɪʃn, trɑːnˈzɪʃn]

noun

1. the process or a period of changing from one state or condition to another:
"students in transition from one programme to another" · "a period of transition" · "a transition to multiparty democracy"

verb

1. undergo or cause to undergo a process or period of transition:
"he transitioned into filmmaking easily" · "we have transitioned from a high-intensity combat operation to a support role in the community" · "a firm specializing in transitioning companies from old technologies to new ones"



- Understand thought processes for some of you tonight
- Understand what an honour it is that you are considering Patchway
- Understand the importance of working together as a team to support and challenge young people

Patchway Community School





Patchway
Community School

Vision

(what we aspire to be)

We aspire to be a **hard-working** and **inclusive** school, **proud** to serve our community, where we aim for all our students to become:

- **Happy and resilient individuals** – who are able to fulfil their dreams, learn from mistakes and live safe and healthy lives.
- **Successful and confident learners** – who are determined to make excellent progress in school and beyond through a passion and curiosity for learning.
- **Responsible, respectful and well-informed citizens** – who develop the characteristics needed to be kind and make a positive contribution to the world.



Patchway
Community School

Values

(the key qualities we embody)

We **ARE...**

Ambitious to achieve more than you ever thought possible

Respectful through being kind and courteous

Excellent through hard work and resilience

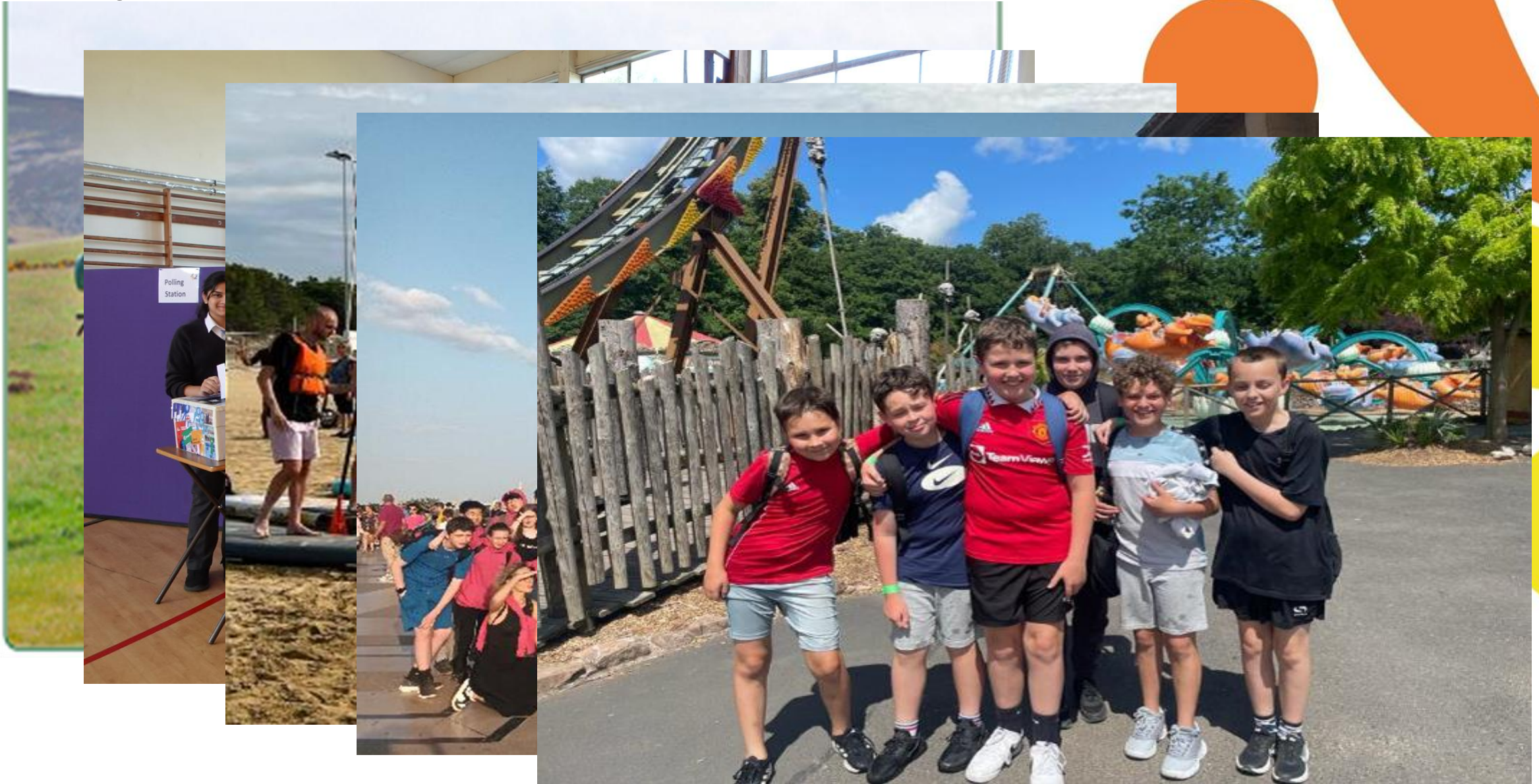
...in everything we do

High expectations for all

1. Attendance + punctuality
2. Engagement + effort
3. Manners + politeness
4. Uniform + appearance
5. Initiative + teamwork



Why Choose Us?



We have seen so many improvements in the school. My daughter is now being taught well, there are no disruptions to lessons and she is so happy...as are we!
(Year 9 Parent)

My son loves school and is thriving! We are very, very impressed and couldn't sing praises highly enough. The support has been phenomenal!!! (Year 7 Parent)

I cannot emphasise enough how pleased I am that I sent my child to Patchway. I cannot imagine any other school supporting her in the way you have. She has developed so much in so many ways and is making excellent progress – thank you all (Year 8 Parent)

WOW!!! 6 grade 9's and 4 grade 8's – my son would not have got those grades in any other school! (Year 11 Parent)



Interim CEO Claire Moloney-Banks

Director of Secondary Steve Moir



Collaboration



Excellence



Opportunity

01454 252059 | www.olympustrust.co.uk



Callicroft
Primary Academy



Charborough Road
Primary School



Filton Hill
Primary School



Meadowbrook
Primary School



Stoke Lodge
Primary School



Abbeywood
Community School



Bradley Stoke
Community School



Lyde Green
Community School



Patchway
Community School



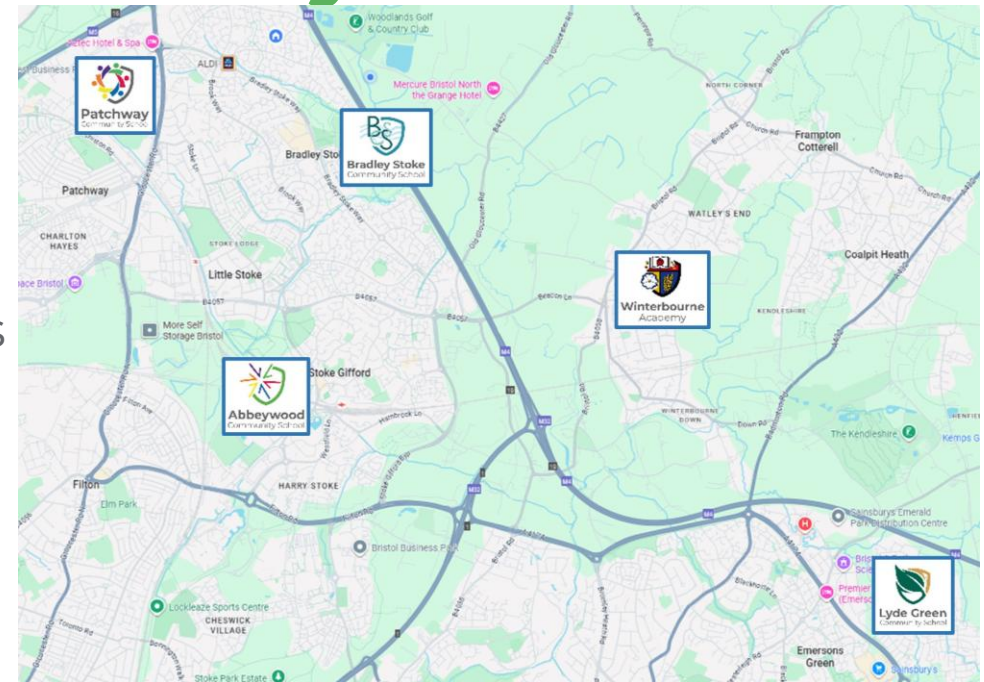
Winterbourne
Academy

As a Trust, we are responsible and accountable for the education of more than **6,500 students between the ages of 4 and 19** and for the employment and support of approx. **850 staff in 10 schools.**

Our shared mission is to enable all our learners to achieve beyond their expectations, to believe in themselves and to develop the skills needed to succeed and enjoy life.

The Benefits for Patchway Community School Being Part of the Olympus Academy Trust

- Shared curriculum, resources and expertise
- Professional development for staff
- School improvement support from specialists
- Events, activities and opportunities across Olympus schools Eg Swimming Gala, Olympus Sports Cup, Post 16 provision
- Financial stability and scalability



Collaboration



Excellence



Opportunity

01454 252059 | www.olympustrust.co.uk

Our Future Together



Our Future Together



Admissions

PLEASE DON'T!

- Miss the **application deadline (31st October 2025)**
- Forget to **accept your place** (offers available on 1st March 2026)

PLEASE DO!

- Name **three** preferences – ***Do not 'play games'***
- Be **honest** (e.g. about where you live)
- Consider how your child will **travel** to school

Olympus Admissions Officer, Lisa Stevens – Lisa.Stevens@olympustrust.co.uk

What next ...

1. Check out info on our **website** > www.patchwaycs.org.uk
2. Read our Patchway **prospectus** + **home-school agreement**
3. Follow us on **Social Media** > *Instagram / Facebook / YouTube*
4. **Enjoy tonight's visit** and meet our staff & students
5. Join our Open Mornings:
 - **Monday 29th September (9:00 – 10:00)**
 - **Friday 3rd October (9:00 – 10:00)**
 - **Monday 6th October (9:00 – 10:00)****Arrive no earlier than 8:45 at reception*
6. Please **ask** if you need any more information:

Email: pcs-enquiries@olympustrust.co.uk

Phone: [01454 862020](tel:01454862020)



Thank You!

The image features the words "Thank You!" rendered in a three-dimensional, blue, sans-serif font. The letters are thick and have a slight shadow on their top surfaces, giving them a physical appearance. They are placed on a light-colored, highly reflective surface that creates clear, slightly blurred reflections of the text below. A soft, circular spotlight illuminates the text from above, creating a bright, glowing area around the words and a gradient of light that fades into a darker background. The overall composition is clean and minimalist, focusing entirely on the message of gratitude.